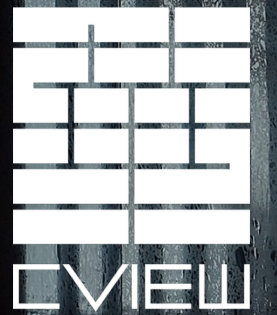


**PRIVATE  
DINING**





# About CVIEW

CVIEW 華 (huá in Chinese) is located on the 16th floor of the landmark M+ in Hong Kong, boasting a prime location that offers a stunning view of the Victoria Harbour in West Kowloon Cultural District. The restaurant presents a range of dishes with flavors from Jiangsu, Zhejiang, and Shanghai, showcasing the essence of Chinese cuisine. It offers a fresh and innovative take on traditional Chinese cuisine in the region, delivering an extraordinary gastronomic experience.

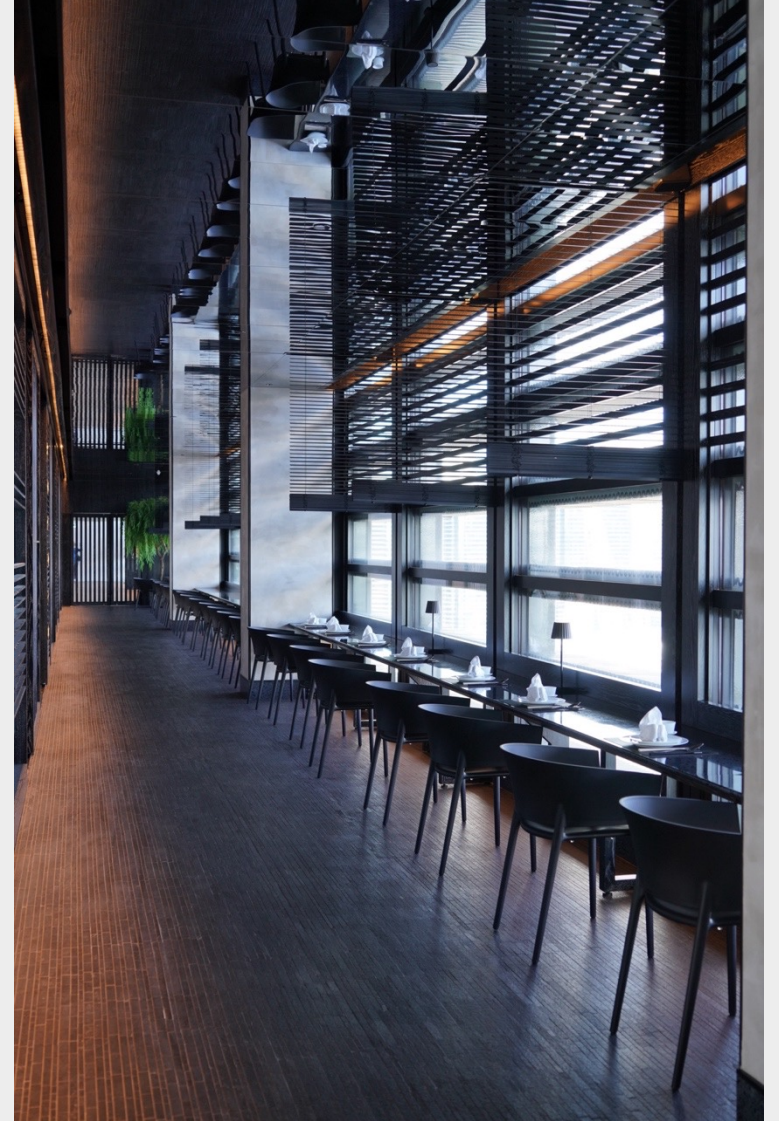
The restaurant's design, led by renowned Hong Kong designer and our Chief Brand Consultant Alan Chan in collaboration with architect Enoch Hui, founder of Atelier E along with lighting designs by the globally celebrated lighting designer Tino Kwan, seamlessly melds modern simplicity with the traditional aesthetics of the East. CVIEW's interior is inspired by the rich history and cultural heritage of Chinese gardens.

Notably, CVIEW continues embedding art and culture in the gastronomic experience. The restaurant revitalised one of the home banquet menus curated by the Chinese Master, Chang Da-Chien, and provide guests a unique culinary journey that brings out the true essence of traditional recipe with carefully selected seasonal ingredients.

\*CVIEW is recognized by VOGUE Living Awards 2023 for the Best Restaurant Interior Design.



CVIEW INTERIOR – THE GARDEN AND PERAL OF ORITENAL ( 愉花園和東方之珠 )



CVIEW INTERIOR – THE GARDEN AND ENTRANCE



CVIEW INTERIOR – PRIVATE DINING ROOM ( 華 謙 )



# Event Photos



# Table Setting



# Presentation





# Presentation



# Presentation



## Daqian Menu



Chang Da-chien was a celebrated Chinese artist known for his innovative techniques and creative use of color. He was also known for his extravagant lifestyle and love of entertaining guests in his home. One of the most famous events he hosted was his home banquet, which was a lavish affair that brought together some of the most prominent artists, writers, and intellectuals of his time. The banquet was held in his sprawling estate, which was adorned with his own artwork and featured ornate gardens and fountains.

**Daqian Menu was inspired by one of Daqian's handwritten calligraphy menu in the 1960s. The founder of CVIEW was fortunate to collect this masterpiece and got in touch with Zhang Daqian's family and was presented with the recipes of his menu. After months of research with the brigade de cuisine, CVIEW reinterpreted and presented the original menus as the "Daqian Menu".**

CVIEW | BRANDS WE WORKED WITH

JPMORGAN  
CHASE & CO.

Sotheby's

  
CHANEL



香港賽馬會慈善信託基金  
The Hong Kong Jockey Club Charities Trust  
同心 同步 同進 RIDING HIGH TOGETHER



Kellogg  HKUST  
EXECUTIVE MBA GLOBAL NETWORK

  
hk'c  
Hong Kong Design Centre  
香港設計中心



CHINA-UNITED STATES  
EXCHANGE FOUNDATION  
中美交流基金會



 Lingnan 嶺南大學  
University 香港 Hong Kong

  
CATHAY PACIFIC

  
PRUDENTIAL  
英國保誠



 THE HONG KONG  
POLYTECHNIC UNIVERSITY  
香港理工大學

M+  
westKowloon  
西九文化區

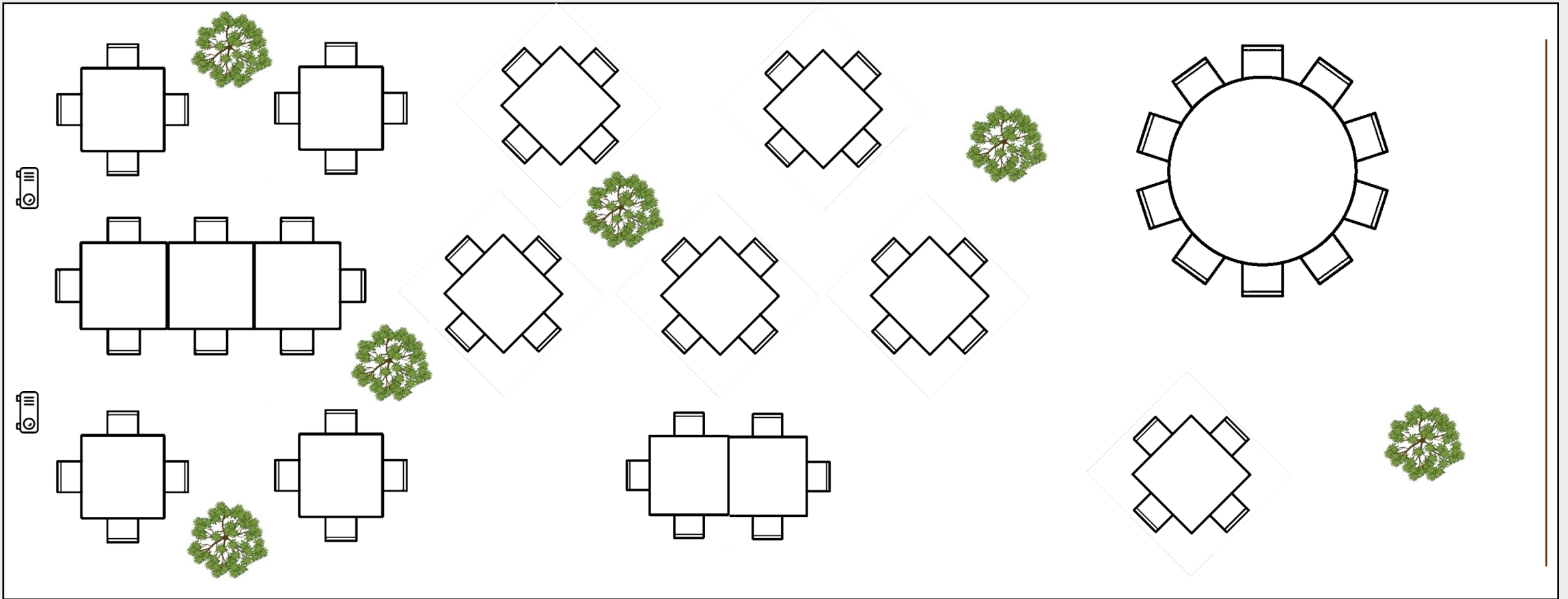
  
HONG KONG INTERIOR DESIGN ASSOCIATION

# The Garden 愉花園 – 1,200 sqft

Up to 110 pax in Chinese Dining Table

Window view of Tsing Ma Bridge and Lantau Island

Projectors



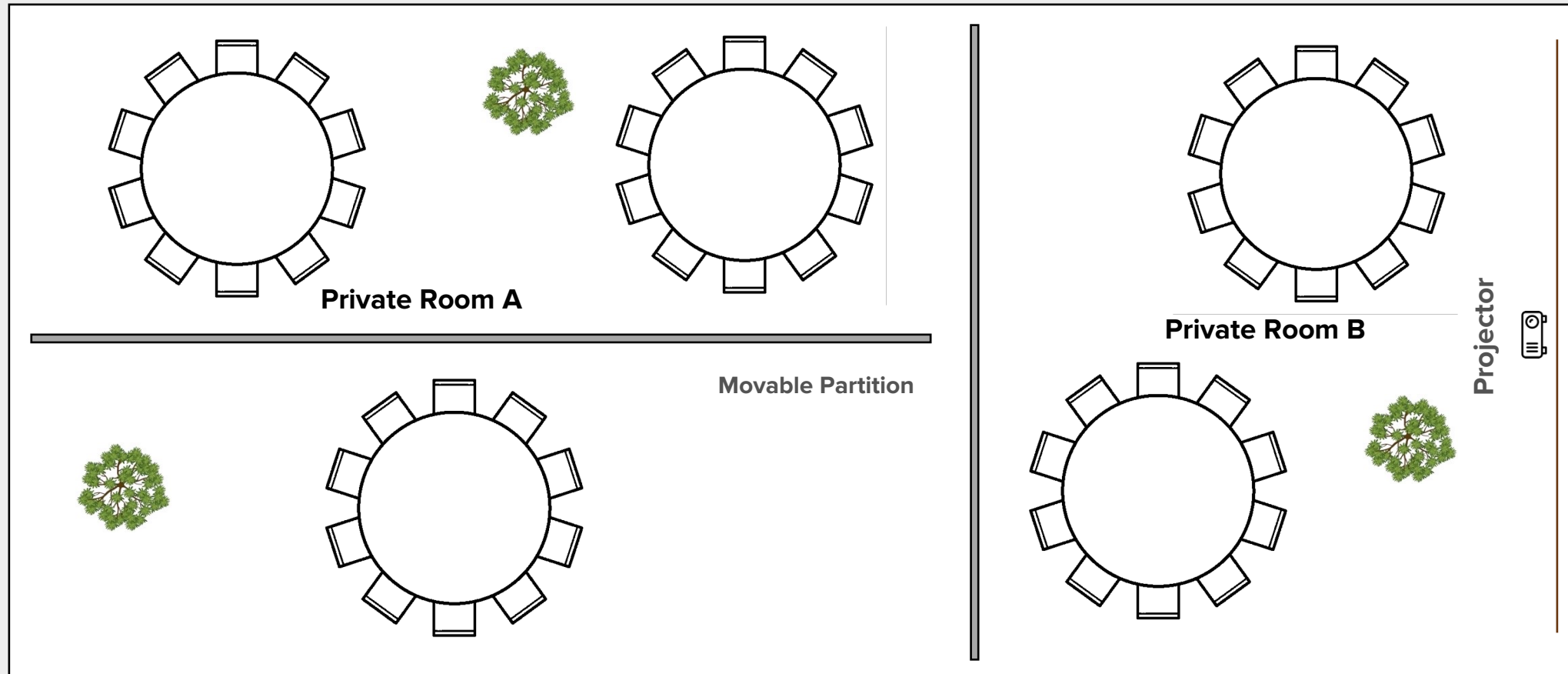
Artwork Hanging Track  
Up to 150 KG

Corridor with Victoria Harbour Seaview  
Window Seat – 30 pax

# Private Dining Room 華譙 – 1,000 sqft

Up to 80 pax in Chinese Dining Table

Window view of Tsing Ma Bridge and Lantau Island



Artwork Hanging Track  
Up to 150 KG

CVIEW

## CVIEW Chairs



**VONDOM AFRICA Black Armchair**  
Polypropylene and Fiber Glass



**VONDOM AFRICA White Armchair**  
Polypropylene and Fiber Glass



**Nagi Walnut and Black Armchair**  
Wood and Leather